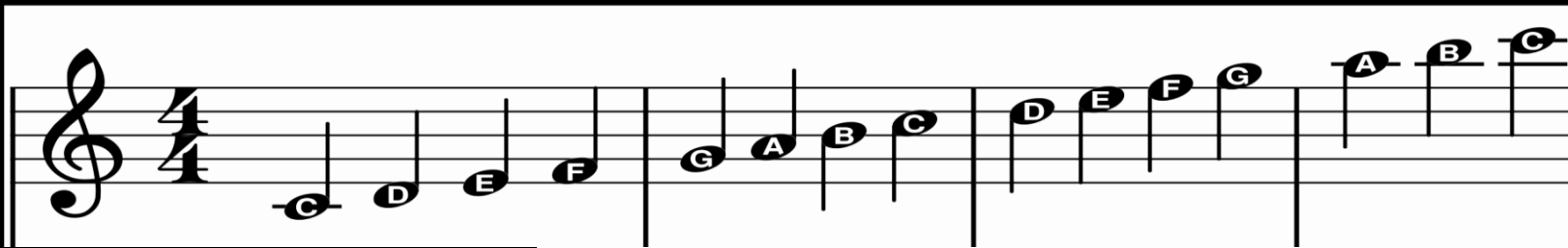


Y7 Music Knowledge Organiser.

TREBLE CLEF



Jooya
Teaching Resources
www.jooya.com

Dynamics in Music

Definitions and Symbols

Term	Symbol	Definition
Fortississimo	<i>fff</i>	very, very loud
Fortissimo	<i>ff</i>	very loud
Forte	<i>f</i>	loud
Mezzo forte	<i>mf</i>	a little loud
Mezzo piano	<i>mp</i>	a little soft
Piano	<i>p</i>	soft
Pianissimo	<i>pp</i>	very soft
Pianississimo	<i>ppp</i>	very, very soft
Crescendo	>>>	gradually getting louder
Decrescendo	<<<	gradually getting softer
Sforzando	<i>sfz</i>	suddenly, with a sudden emphasis

The Keyboard



MUSICAL ELEMENTS

A number of elements affect how a piece of music is played and sounds.

TIMBRE / TONE COLOUR



Timbre (or tone colour) is the term used to describe the particular sound quality of an instrument or voice.

PITCH



Pitch is how high or low a note sounds.

TEXTURE



The effect of melodies and harmonies together. A lot of sounds playing close together is a thick texture.

DYNAMICS



Dynamics are how loud or quiet a piece of music is played.

TEMPO



Tempo refers to how fast or slow a piece of music is played.

DURATION



Duration is how long or short a note is.

STRUCTURE



Structure is the overall plan of a piece of music.

SILENCE

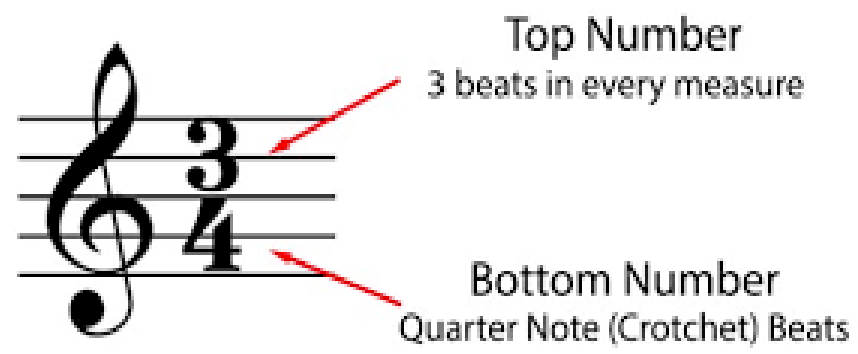


Silence (the gaps, rests and breaks) is also part of a piece of music.



3/4 Time Signature

Treble Clef



Rhythm in Music
Note Values- UK



Term	Symbol	Value
semibreve		4 beats
minim		2 beats
crotchet		1 beat
quaver		1/2 beat
pair of quavers		1/2 + 1/2 = 1
semiquaver		1/4 beat
joined semiquavers		1/4 + 1/4 + 1/4 + 1/4 = 1