

THEATRE ROLES & RESPONSIBILITIES

THEATRE CREATORS

Playwright	
<ul style="list-style-type: none"> Writes the script of the play, including dialogue and stage directions. 	<p><u>BEFORE REHEARSALS</u></p> <ul style="list-style-type: none"> Prepares the script

Performer	
<ul style="list-style-type: none"> Appears in a production, e.g. as an actor, dancer, singer. 	<p><u>DURING REHEARSALS</u></p> <ul style="list-style-type: none"> Learns lines and blocking
<ul style="list-style-type: none"> Creates a performance or assumes a role on stage in front of an audience. 	<p><u>IN PERFORMANCE</u></p> <ul style="list-style-type: none"> Appears before an audience and performs their role(s).

Understudy	
<ul style="list-style-type: none"> Learns a part, including lines and movements. 	<p><u>DURING REHEARSALS</u></p> <ul style="list-style-type: none"> Learns the role(s) they are covering.
<ul style="list-style-type: none"> Takes over a role if there is a planned or unexpected absence. 	<p><u>IN PERFORMANCE</u></p> <ul style="list-style-type: none"> Is prepared to 'go on' in case of an absence.

Director	
<ul style="list-style-type: none"> Oversees the creative aspects of the production. Develops the 'concept' for the production. Liaises with designers & stage manager. Rehearses the performers – gives notes and agrees blocking. 	<p><u>BEFORE REHEARSALS</u></p> <ul style="list-style-type: none"> Reads and studies the play – decides concept. Casts performers.
	<p><u>DURING REHEARSALS</u></p> <ul style="list-style-type: none"> Rehearses performers.



DESIGNERS

Set Designer	
<ul style="list-style-type: none"> Designs the set of the play and the set dressing (objects placed on the stage). Provides sketches and other design materials. Oversees the creation of the set. 	<p><u>BEFORE REHEARSALS</u></p> <ul style="list-style-type: none"> Researches the play/context. Develops set design ideas.
	<p><u>DURING REHEARSALS</u></p> <ul style="list-style-type: none"> Ensures the set is built and operates correctly.



Sound Designer	
<ul style="list-style-type: none"> Designs the sound required for the performance, this might include music and sound effects. Considers if amplification e.g. microphones are needed. Creates the sound plot. 	<p><u>BEFORE REHEARSALS</u></p> <ul style="list-style-type: none"> Researches the play/context. Develops sound design ideas.
	<p><u>DURING REHEARSALS</u></p> <ul style="list-style-type: none"> Creates plot sheets and cues for the sound.

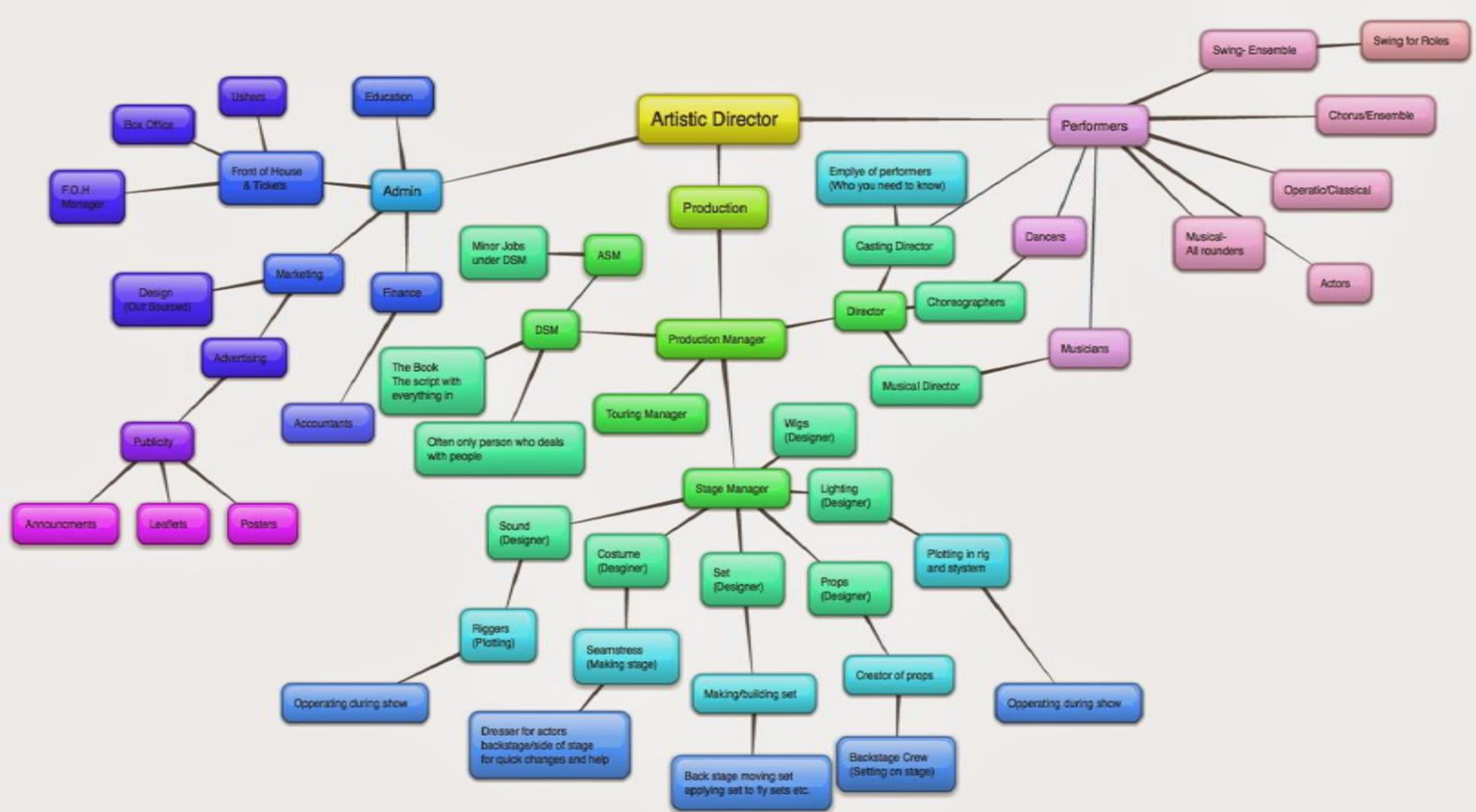


Lighting Designer	
<ul style="list-style-type: none"> Designs the lighting effects and states that will be used. Understands the technical capabilities of the theatre. Creates the lighting plot. 	<p><u>BEFORE REHEARSALS</u></p> <ul style="list-style-type: none"> Researches the play/context. Develops lighting design ideas.
	<p><u>DURING REHEARSALS</u></p> <ul style="list-style-type: none"> Creates plot sheets and cues for the lighting.

Puppet Designer	
<ul style="list-style-type: none"> Designs the puppets for a production. Considers the style of the puppets and how they will be operated. 	<p><u>BEFORE REHEARSALS</u></p> <ul style="list-style-type: none"> Researches the play/context. Develops puppet design ideas.
	<p><u>DURING REHEARSALS</u></p> <ul style="list-style-type: none"> Makes and provides puppets for rehearsals.

DIG DEEPER QUESTIONS

- Which roles do you think will have to work closely together?
 Why are communication skills so important for each of these roles?
 Which role do you think would be the most challenging role? Why?
 Which role do you think is the most important? Why?



THEATRE ROLES & RESPONSIBILITIES

THEATRE STAFF

Theatre Manager

- Runs the theatre building, including overseeing the Front of House staff.

IN PERFORMANCE

- Oversees the operation of Front of House and box office.



Front of House Staff

- Box Office: where audience members can buy/collect their tickets.
- Ushers: look after the audience inside the auditorium.

IN PERFORMANCE

- Sell programmes and show memorabilia.
- Show audience members to their seats.
- Assist audience members with any problems.

Stage Manager

- Runs the backstage elements of the play and supervises the backstage crew.
- Organises the rehearsal schedule.
- Keeps a list of props and other technical needs.
- Creates a prompt book.
- Calls the cues for the performance.

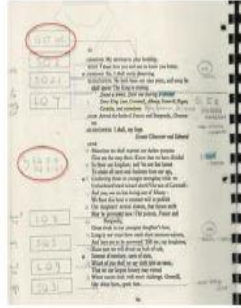
DURING REHEARSALS

- Creates rehearsal schedules and props list.
- Notes blocking and creates prompt book.

IN PERFORMANCE

- Ensures the smooth running of the show.
- 'Calls' the show by announcing cues to cast and technicians.

CREW



Technician

- Operates the technical equipment, e.g. lighting and sound boards, during a performance.

DURING REHEARSALS

- Run the technical elements during technical and dress rehearsals.

IN PERFORMANCE

- Operates the technical equipment, e.g. sound board.

DIG DEEPER QUESTIONS

- Which roles do you think will have to work closely together?
- Why are communication skills so important for each of these roles?
- Which role do you think would be the most challenging role? Why?
- Which role do you think is the most important? Why?