

Birley Academy Ski Trip March 2026



THE BIRLEY ACADEMY

SKI TRIP 2026



Thursday 26th March 2026

Stansted 13:10 - 18:35 (+2) Sofia Airport (SOF)

Flight Number - FR9961 - Airline - RyanAir



Tuesday 31st March 2026

Sofia - 18:35 - 198:50 (-2) Stansted (STN)

Flight Number: FR2691 - Airline - RyanAir



Accommodation – Bansko – Casa Karina



WHAT IS INCLUDED

The Fundamentals



Return Flights



All coach transfers



Hotel Accommodation



Half Board
Meals



SLT Resort
Manager

Travel Details

Outbound

Outbound -
26th March
2026

07:30 Coach
Pick up School

10:00 Arrive
Stansted

13:10 Ryanair
Flight to Sofia
- FR9961

18:35 Arrives
Sofia

21:30 Arrive
Hotel Casa
Karina 4*

Terminal 3

Inbound

Inbound - 31st
March 2026

13:15 Check out
and airport pick
up

15:30 Arrive
Sofia Airport

19:35 Ryanair
Flight to Stansted
- FR2691

19:50 Arrives
Stansted

21:00 Depart
back to The
Birley Academy

00:00 Arrive back
at The Birley
Academy



DAY BY DAY ITINERARY

Day 1 Travel	07:00 Depart	13:10 Flight	Arrival 18:35	Arrive 23:45
Day 2 Ski	Morning Lessons 9:00- 12:00	Lunch 12:15 13:45	Afternoon Lessons 14:00 - 16:00	Sledging Night
Day 3 Ski	Morning Lessons 9:00- 12:00	Lunch 12:15 13:45	Afternoon Lessons 14:00 - 16:00	Sports evening
Day 4 Ski	Morning Lessons 9:00- 12:00	Lunch 12:15 13:45	Afternoon Lessons 14:00 - 16:00	Pool/quiz night
Day 5 Ski	Morning Lessons 9:00- 12:00	Lunch 12:15 13:45	Afternoon Lessons 14:00 - 16:00	Crepe and chocolate
Day 6 Travel	Checkout 11:00 and depart for Sofia	19:35 Flight	19:00 Arrival	Midnight Arrive school

SPENDING MONEY



LUGGAGE ALLOWANCE



Small Bag

Carry onboard

Must fit under seat in front of you

Can be a handbag, laptop bag or backpack

40 x 30 x 20cm

Free



Checked Baggage

Check in

Max 10kg, 20kg or 23kg

Must be dropped at airport check-in desk
before security

80 x 120 x 120cm

**20kg
Case
included**

WHAT TO PACK

Please pack appropriately for the weather and activities we are taking part in.

Average temperature is between -2 to 11 degrees.

Kit list will be handed out at the end of the presentation.

Liquids must be 100ml or under – Can be kept in backpacks.

Ski clothing and evening/clothes to chill in at night time.

WHAT TO PACK



shutterstock.com · 1309871866



LOCATION

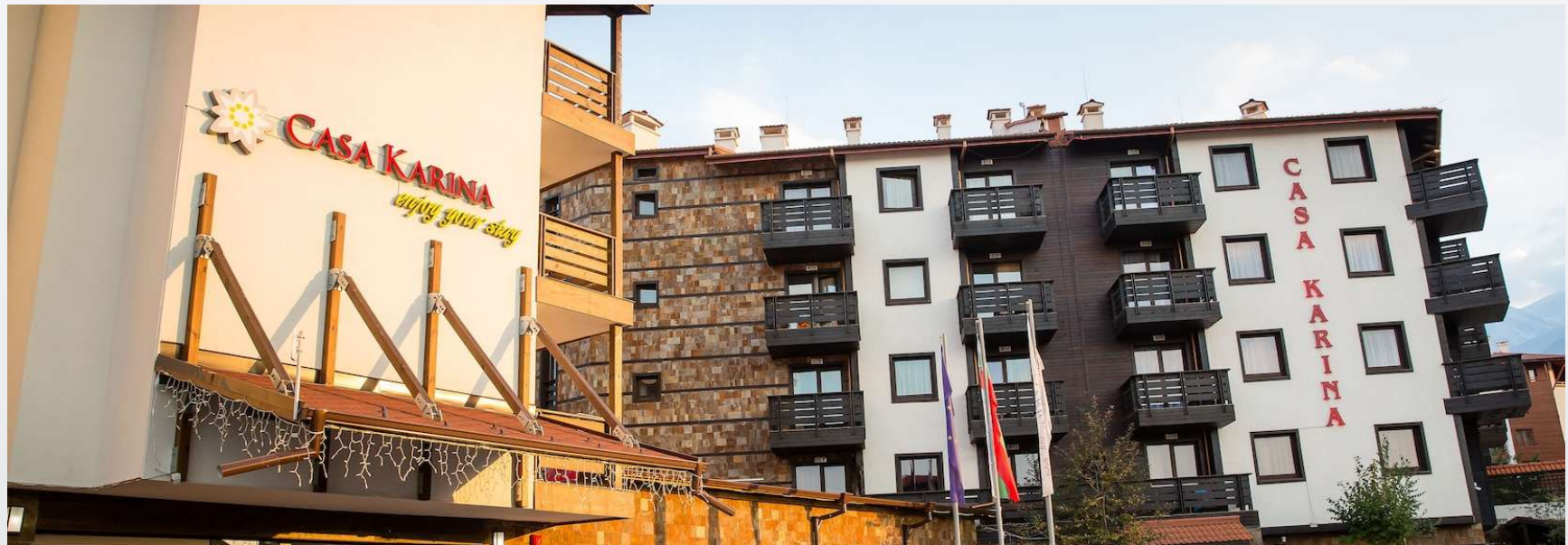
Bansko





ACCOMMODATION

Casa Karina





990 m - 2600 m

75 км маркирани ски писти

Marked ski runs
75 km

-  Кабинов лифт
Gondola lift
-  Седалкови лифтове
Chair lifts
-  Влекове
Drag lifts
-  Хижа / Hut
-  Машина за сняг
Snow mashine
-  Наем на ски
Rent a ski
-  Информация
Information
-  Магазин
Shop
-  Обменно бюро
Change
-  Каса
Cash Desk
-  Ски училище
Ski shool
-  Стрелбище
Range
-  Паркинг
Parking
-  Бърза помощ
First Aid
-  Ресторант
Restaurant
-  Фънпарк
Funpark
-  Осветление
Light

-  Лека
Light
-  Средна
Middle
-  Трудна
Difficult
-  Ски път
Ski road



Лифтове / Lifts



- Банско  Bansko
- Моста  Mosta
- Коларски  Kolarski
- Бъндерица 1  Banderitza 1
- Бъндерица 2  Banderitza 2
- Шилигарник  Shiligarnik
- Чалин валог  Chalin valog
- Тодорка  Todorka
- Плато  Plato
- Стара котва  Stara kotva
- Детска котва  Detska kotva
- Паница Б  Panica B
- Влек Чалин  Vlek Chalin
- Църна Могила  Tzarna Mogila

Getting off the Slopes

There are two options for people to get off the slopes.

1. Ski out – As it states, ski out from the top to the bottom on a specific path/route (20-25 minutes)
2. Gondala Ride back down. (10/15 Minutes)



Bansko App

Hoodie

Included in the price is a personalised Hoodie. These are for everyone on the tour.

Each hoodie will include printed initials and a Birley Academy Ski Trip logo.

There are some examples of hoodie sizes to try on down at the front at the end of the presentation.



MHU

Meals / Food

We have a half board basis included in the price (Breakfast and Evening Meal)

We do not have lunch provided.

Packed lunch (Supermarket), Bread and meats from the breakfast bar.

Food vendors on the slopes. (£££)



Student Info

As part of the information we need each students height, weight and shoe size.

This is to ensure that all ski boots and skis are fitted correctly to reduce injury.

If you havent done already then can you please see Mr Puckett at the end where he can fill in your information.

Student Info - Rooms

Thursday 12th February 2026

Room 111 from 15:00 – 15:30 there will be a rooming meeting.

Rooms are in 4's.

If you can, please come to the meeting with your group so the spreadhseet can be filled in.



PICK UP & DROP OFF

Please do not use or come into the front car park in school.

Please ensure that your child is dropped off between 7:00am – 7:15am.



PASSPORTS

Passports need to be brought into school (reception only), w/c 16.03.2026.

When handed in at reception, you will receive a receipt that acknowledges that we have taken the passport. They will be kept in the school safe.

On the trip passports will be with the students member of staff at all times unless the student needs it. The passports will be given back to students when we are 10 minutes away from school.



GHIC

Recommended to get a GHIC card. These are not essential, but highly recommended.

They are free of charge and can take between 7-14 days to arrive.



NO NUTS

Please be mindful that we have students on the trip who are allergic to nuts.

With this in mind, could you please ensure that no nuts or snacks that have nuts in them are brought on the trip please.



Medication

If your child requires certain medication, or if you want them to have any paracetamol etc, this must be sent with your child in a clear plastic bag that has their name on it.

Any medication must be kept by teaching staff and students need to come and collect it and when they need it.

Any medication that you wish to send your child with also needs emailing to rebeccajones@birleysecondaryacademy.co.uk

