



The Birley Academy  
A L.E.A.D. Academy



# Careers Newsletter

## A BIG THANK YOU...

Y10 Work Experience  
Monday 23 - Thursday 26 June 2025

To all our Parents/Carers who assisted their children and all Birley Staff who assisted their students in finding appropriate Company Placements for Y10 Work Experience - June 2025. To all the Companies, Local Businesses Primary Schools and Nurseries who offered placement and supported our students throughout their experience, thank you.

All of the practical advice and general positive guidance given during the process led to over 160 of our Y10 students being given the opportunity to go out into the world of work and experience what, for the majority, was a very positive and enjoyable 4 days.

Staff who visited the students in situ received some wonderful comments and great feedback from the Companies on how well the students performed for the 4 days. The student references received back in School from the Companies reflect this. I have included an example below and there will be many more displayed around School:

### Company Quotes...

***"Lily has got on well, followed instruction, been punctual and enthusiastic". It's my Life***

***"Daniella has worked well with the team, and we have enjoyed having her here, she is polite and hardworking – hope she enjoyed it too". The Rhubarb Shed***

***"Isabelle was a pleasure to have in practice and we would consider her for future opportunities to see practice, if a career in Veterinary Practice is something she wants to pursue". Ark Veterinary Surgery***

***"Alex beat me into work! Really impressed with his IT skills and he worked well on CAD". TT Electronics***

***"Ryan was polite and respectful he used his own initiative and asked for help when needed". Chatter Independent Speech therapy***

### Student Quotes...

***"My placement has been 100% inspirational, it has enabled me to be certain that I absolutely want to be a primary school teacher". Robyn***

***"I have really enjoyed the experience and I think it has helped my understanding of what it is like to work at a car company". Alfie***

***"I think I have been doing well learning a new routine, different practices and I am adapting my current knowledge to a new situation". Callum***



**WELL DONE...** to all our students who completed their Work Experience and conducted themselves admirably during their brief taste of the world of work.



A partnership of  
Sheffield Hallam University  
and the University of Sheffield

[access hepp website HERE](#)

Working across South Yorkshire to encourage more children, young people and adults to consider higher education opportunities.

[Parent Carer Information HERE](#)

## Higher Education: A Guide for Parents & Carers



A partnership of  
Sheffield Hallam University  
and the University of Sheffield

### Sector Safari Careers Trail



#### ✨ FREE family fun in Sheffield! ✨

Set off on a **Sector Safari**—a city centre careers trail from 23 June–10 August! 🗺️

- 🧑‍🔬 Explore 30+ amazing businesses
  - 🔍 Solve puzzles, crack codes
  - 🏆 Win prizes + earn a completer badge!
- Perfect for kids, families & Year 10s w/o placements!

📍 Maps @ key city spots

👉 [Sector Safari | See it Be it](#)

#SectorSafari #SheffieldCareersTrail  
#FamilyFun

Sector Safari is a free and interactive careers trail around the city that lets our pupils / students and their families explore potential future careers, all while discovering the diverse local businesses in their city.

Created by Sheffield City Council's See It Be It team, in collaboration with 30 local businesses, it is a completely free event running from June to August 2025.

At each business or venue on the trail, there will be a poster with a QR code. Scanning this code with a phone will give more information about the company, the kind of jobs they offer and some fun facts about the area. The booklet also contains puzzles to complete as your child makes their way through the city.

The trail takes around 2 to 3 hours to complete in full. Your child doesn't have to do the whole trail, but to solve the word code in the booklet, they will need to visit all the locations.

To find out more and where to collect your free booklets,

visit this site: [Sector Safari | See it Be it](#)

🗺️ **How it works:** Grab a **trail map and puzzle booklet**, follow the route, find posters at each business, complete fun puzzles, and crack the mystery code. It's a hands-on adventure into the world of work—educational *and* fun!

🗺️ **Pick up your map and booklet at:**

**Millennium Gallery** (Info Desk – bottom of escalators) 48 Arundel Gate, S1 2PP  
Tue–Sat: 10am–5pm | Sun: 11am–4pm

**Sheffield Cathedral** (Gift Shop) Church Street, S1 1HA Mon–Fri: 8:30am–5:30pm | Sat: 9am–4pm | Sun: 11am–3pm

**Central Library** Surrey Street, S1 1XZ Mon–Fri: 10am–5pm | Sat: 10am–4pm

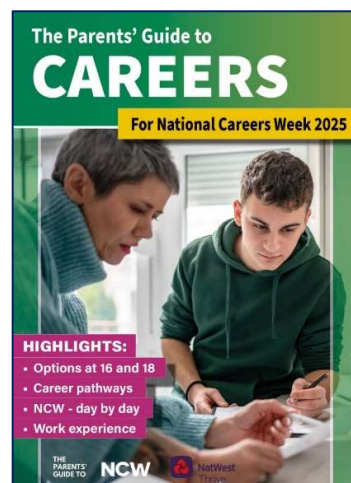
**The Moor Market** (Info Desk) 77 The Moor, S1 4PF Mon–Sat: 8:30am–5:30pm



Follow us: @birleyacademy @birleyheadteacher @birleydeputy



[Click here to view the Guide](#)



June Edition available.....

*Is your child considering an apprenticeship as their next step? Choices magazine is the ultimate parent and carer guide to apprenticeships and technical education! It is completely free of charge – find this month's edition here: [amapps.uk/parent-magazine](http://amapps.uk/parent-magazine) and sign up to receive it each month, direct to your inbox: [amapps.uk/choices](http://amapps.uk/choices)*

*Amazing Apprenticeships' Parent and Carer zone is also a great place to explore apprenticeships and technical education: [amazingapprenticeships.com/zones/parent/](http://amazingapprenticeships.com/zones/parent/)*

Careerpilot

**START [HERE](#)**

**Explore Jobs by subject... Explore Jobs by sector... Explore Jobs by your values...**

Career Pilot is an award-winning, one-stop careers website designed by qualified career advisers and teachers. The careers platform includes the Student Zone, Parent Zone, Adviser Zone and Reporting Zone, as well as the Pathway Planner.

Careerpilot can be used by students aged 11-19 in schools and colleges. The site helps students to develop career skills to help students to manage career decisions as they go through life. The site does this through showing students the three-stages they can always follow whenever they make a career decision. 1..Start with you 2..Explore your options 3.. Plan your next step

The site includes tools and activities, information and advice on all progression pathways.

Parents can access to the [Careerpilot Parent Zone](#) - which has answers to questions parents are frequently asking with advice and additional useful links so they feel informed and able to support their young person.

## LMI Labour Market Information

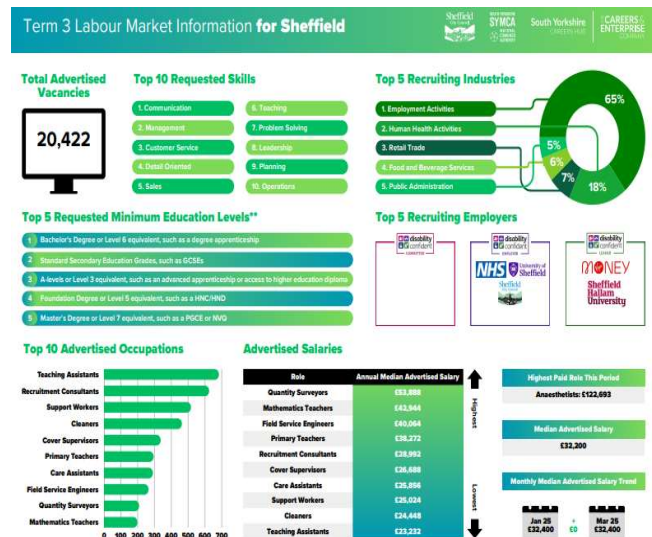
### What is LMI?

Labour Market information is the facts and figures of the past, present and future work force. It informs us of national and local trends as well as what jobs are in demand and declining. It also gives an idea of who and how many individuals are employed at any given time.

Why is it important and how can it help students make informed choices?

- It can help you understand what jobs are in your local region.
- It can show you the skills are required for specific jobs.
- It can make you aware of jobs that are increasing and what jobs are declining.
- Make you aware of what qualifications you might need.

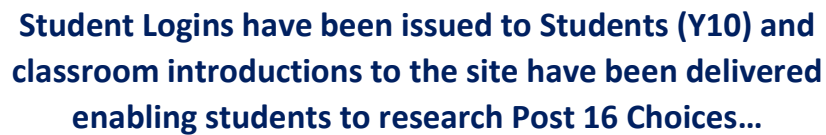
LMI is changing all the time and it is important to explore and a great way to do this is through Careerpilot /LMI For All







**POST 16.....**



Find out more here by accessing the website: [SHEFFIELD PROGRESS](#)

## Sheffield Progress on Line application

## WHAT IS SHEFFIELD PROGRESS?

- It is an Area Wide Prospectus on line
- It is basically a one stop shop for all Y11 students in Sheffield to research, view and apply for Post 16 provision
- These places include Colleges, 6<sup>th</sup> Form Schools, Training Providers and to register Apprenticeship interest (there are some exceptions when direct application is required eg, AMRC, Chesterfield College, Mercia Trust)
- It gives a clear view of what you are applying for, the stage of your application, and the result of your application
- The majority of Y11 students in Sheffield mainstream schools use the system to search and apply

Login details for the site have been issued to students (Y10) to access their account both at home and at school and begin the Post 16 Application journey by researching providers, courses and subjects available.

## Guide to Qualification Levels

## Qualification Levels Guide – GCSE to Degree Level

	University Degree (BA/BSc/BEng)	University Degree (BA/BSc/BEng)	Degree Apprenticeship (NVQ L3 + L6)
<b>L6</b>	Grades Needed: Usually GCSE Maths/English at grade 4/5 and 3-4 A-Levels/BTEC L3 Extended Diploma (check first)	Usually GCSE Maths/English at grade 4/5 and 3-4 A-Levels/BTEC L3 Extended Diploma (check first)	Usually GCSE Maths/English at grade 4/5 and 3-4 A-Levels/BTEC L3 Extended Diploma (check first)
<b>L5</b>	Foundation Degree (FQA, FSc)	Foundation Degree (FdA, FSc)	Higher/Degree Apprenticeship (NVQ L4 + L5)
<b>L4</b>	HND (Higher National Diploma – L3) HNC (Higher National Certificate – L4)	HND (Higher National Diploma – L3) HNC (Higher National Certificate – L4)	
Grades Needed:	Usually GCSE Maths/English at grade 4 and 3-2 A-Levels/L3 Diploma/Extended Diploma	Usually GCSE Maths/English at grade 4 and 3-2 A-Levels/L3 Diploma/Extended Diploma	Usually GCSE Maths/English at grade 4 and 3-2 A-Levels/L3 Diploma/Extended Diploma
<b>L3</b>	A-Levels	L3 Diploma / Extended Diploma (BTEC or other) / Access to HE courses	Advanced Apprenticeship (NVQ L3)
Entry Grades Needed:	Usually 5 GCSEs at grade 5 or higher, including Maths and English	5 GCSEs at grade 4 or higher (usually including Maths and English)	Usually at least 5 GCSEs (but sometimes no formal qualifications)
<b>L2</b>	GCSEs (grades 9-4)	L2 National / BTEC Diploma / Functional Skills	Intermediate Apprenticeship (NVQ L2)
Entry Grades Needed:	None	3-4 GCSEs at grade 3 or higher (usually including Maths and English)	Usually none, although sometimes GCSE Maths and English and a skills test.
<b>L1</b>	GCSEs (grades 3-1)	L1 Diploma / Functional Skills	Traineeship (preparation for apprenticeship)
Entry Grades Needed:	None	None (sometimes basic Maths and English)	None
Entry Level 3	Key Stage 3	E3 Diploma (Foundation)	–
Entry Grades Needed:	None	None	–
	School / 6 <sup>th</sup> Form	College / Further Education	Apprenticeships



## CEC Endeavour Booklet Post 16:

## WHAT'S NEXT?

### More Information:

### Making choices after Y11: Sheffield Progress:

<https://www.sheffieldprogress.co.uk/information/age-15-18/your-choices-after-year-11>

Know your Levels: <https://hurak.com/blog/qualification-levels-uk>

## Sixth Form and College - Open Events 2025-26

**Before you go:** Visit the 6<sup>th</sup> Form School/College Website to confirm the date, times and if you have to pre book.

All Saints 6 <sup>th</sup> Form School	Saturday 8 November 2025
Astrea 6 <sup>th</sup> Form School	Check website
Eckington 6 <sup>th</sup> Form School	Wednesday 22 October 2025
Forge Valley 6 <sup>th</sup> Form School	Wednesday 12 November 2025
High Storrs 6 <sup>th</sup> Form School	Thursday 6 November 2025
King Egbert 6 <sup>th</sup> Form School	Thursday 13 November 2025
King Edward VII 6 <sup>th</sup> Form School	Tuesday 11 November 2025
Meadowhead 6 <sup>th</sup> Form School	Thursday 6 November 2025
Notre Dame 6 <sup>th</sup> Form School	Saturday 15 November 2025
Sheffield South East Sixth Form (Sheffield Park Academy)	Thursday 4 December 2025
Silverdale 6 <sup>th</sup> Form School	Thursday 20 November 2025
Tapton 6 <sup>th</sup> Form School	Wednesday 22 October 2025

The Sheffield College – <b>All Campuses</b> City/Hillsborough /Advanced Technology Centre	Thursday 23 October 2025	4pm - 7pm (6pm - 7pm 'Quiet Hour')
Bloom Open Day (Peaks)	Wednesday 5 November 2025 Wednesday 22 April 2026	3.30pm - 6pm 3.30pm - 6pm
Landmarks Specialist College	Tuesday 4 February 2025 Tuesday 29 April 2025	10am - 12pm 5pm - 7pm
The Sheffield College – <b>All Campuses</b> City/Hillsborough/Advanced Technology Centre	Wednesday 12 November 2025	4pm - 7pm (6pm - 7pm 'Quiet Hour')
Campus Open Day – Pennine Five Adult English, Maths and ESOL	Wednesday 3 December 2025	4pm - 6pm
The Sheffield College – <b>All Campuses</b> City/Hillsborough/Advanced Technology Centre	Thursday 22 January 2026	4pm - 7pm (6pm - 7pm 'Quiet Hour')
<b>City</b> Campus Open Day	Tuesday 12 February 2026	4pm - 7pm
<b>Hillsborough</b> Campus Open Day	Thursday 5 March 2026	4pm - 7pm
<b>Advanced Technology Centre</b> Campus Open Day	Tuesday 24 March 2026	4pm - 7pm
Community Open Day	Saturday 9 May 2026	10am - 1pm

<b>Out of Sheffield:</b>	
Barnsley College	Check website
Chesterfield College	<a href="https://www.chesterfield.ac.uk/visiting-campus/open-days/">https://www.chesterfield.ac.uk/visiting-campus/open-days/</a>
Rotherham College	<a href="https://www.rotherham.ac.uk/open-events/">https://www.rotherham.ac.uk/open-events/</a>
Thomas Rotherham College	Check website
UTC Sheffield City Centre	Check website
UTC Sheffield OLP	Check website

**Check before you go:** check websites for further information and more detail on Open Dates/Times...



**Bloom** Preparation for Adult Life at The Sheffield College:  
[click HERE for more information](#)



**Nacro** Get Set! Courses:  
[Further Nacro information click HERE](#)

**Landmarks Specialists College:**  
[Landmarks information HERE](#)



**Sheaf Training** - Post 16 SEND Education  
Lifelong Learning Sheffield  
[Sheaf Training - click HERE](#)

## Meet the Careers Team: Careers Hub – based in your school Library



Careers Leader: Ann Pemberton  
Work Experience/Sheffield Progress Coordinator  
Based in the School Library Mon/Tue/Wed/Thurs



Careers Adviser: Sophie Short  
Progress Careers  
Based in the school Library one day per week

## Dates for your Diary

September	Y11 Inspiration Week
October	Y9 Inspiration Week Y11 Post 16 Evening
November	Green Careers Week 3 -7 November 2025 Y11 Mock Interviews
December	
January	Y9 Options - Group Workshops Y8 Inspiration Week
February	National Apprenticeship Week 9 - 15 February 2026
March	National Careers Week 2 - 7 March 2026 Y7 Inspiration Week

## RESEARCH....



Go Construct: Built Environment Civil  
Engineering Surveyors Architects  
<https://www.goconstruct.org/>

“BUZZ QUIZ” What personality type are you?  
Take the Quiz....  
<https://careerswales.gov.wales/buzzquiz>

Apprenticeships:  
<https://www.gov.uk/apply-apprenticeship>

Higher Education - University:  
<https://www.ucas.com/explore/subjects>

SEND Post 16 information:  
[SEND Preparation for Adulthood - HERE](#)

SEND Preparation for Adulthood Transition  
Guide: [SEND Transition Guide HERE](#)

SEND Planning your Post 16 Journey  
[Post 16 Guide - Here](#)